

# GRAFTING CLAY



WITH DEBOLETTE

## You will need:

- Air dry clay, plasticine or salt dough
- Scissors
- Squirrel template if you choose this design

Try your hand at some 3D clay modelling. There are three different objects to choose from:

- Option 1 - Horseshoe
- Option 2 - Squirrel
- Option 3 - Flower

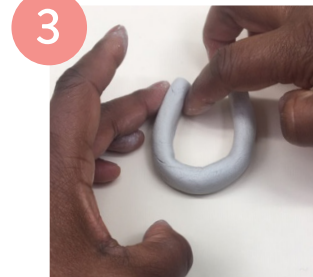
## OPTION 1 HORSESHOE



Take a small ball of clay and roll it into a ball using your hands.



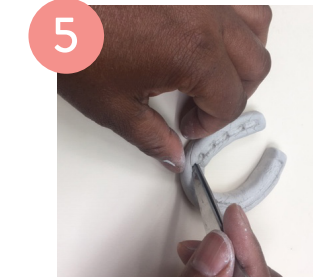
Roll the clay into a long roll (sausage shape) in your hands.



Working on the white piece of paper, form the roll into a horseshoe shape. Use the nail of your forefinger to shape the horseshoe.



Flatten the top of the horseshoe and tap along your shape with the same finger.



Use scissors to create a groove in the horseshoe.



Moving around the horseshoe make marks where the nails would go.



Your horseshoe is finished. Store it somewhere safe to dry.

This will take approximately 24/48 hours to dry fully if using air dry clay.

## OPTION 2 SQUIRREL

Before you start cut out the Squirrel template from your templates sheet or draw your own and cut it out from a sheet of paper.



Take a small ball of clay and roll it into a ball using your hands.



Place on your sheet of paper and flatten with the palm of your hand.



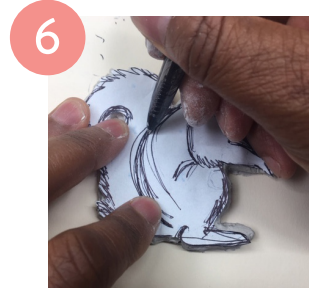
Place the squirrel template on top of the clay.



Use an old pen or the yellow felt tip to 'cut' out your shape.



Continue to use the pen/felt tip to form the shape, smoothing the edges as you go around the shape.



Mark the body and add lines to the clay through the template.

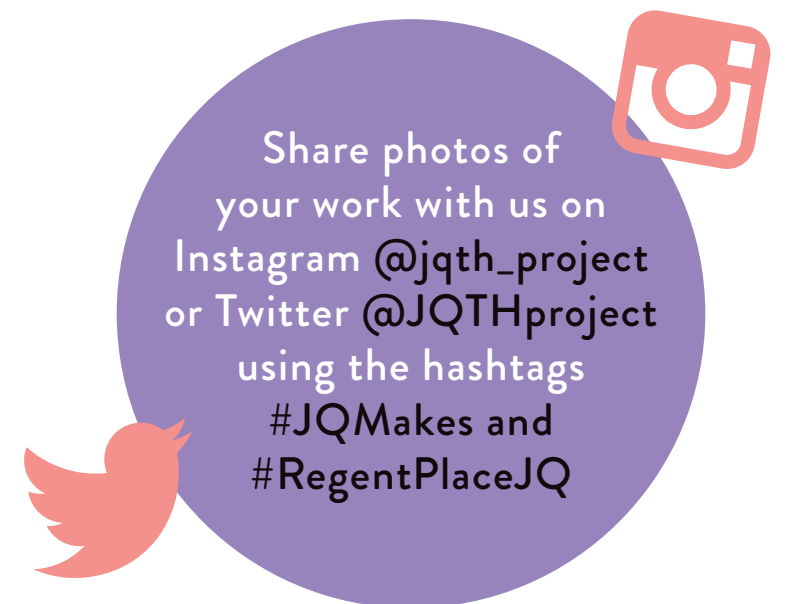


Take the template off and go over the lines with your pen.



Your squirrel is finished. Store it somewhere safe to dry.

This will take approximately 24/48 hours to dry fully, if using air dry clay.





## OPTION 3

# FLOWER



Break off a piece of clay the size of a 1p piece. Shape the piece to form a petal. Make a minimum of five petals.



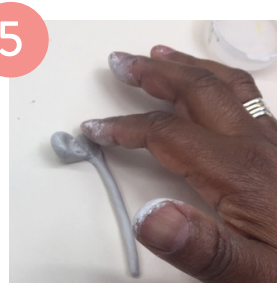
Break off a tiny piece to make the centre. Roll into a small ball in the palm of your hand.



Break another piece of clay to form the stem. Roll on your paper using the palm of your hand.



Break another piece off the size of a 1 pence piece. Shape the piece of clay into a leaf. Add veins using your pen/felt.



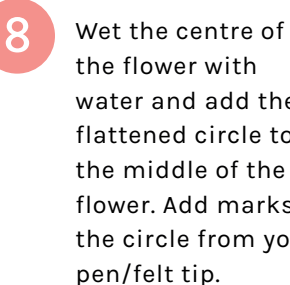
Start Assembly - Press the first petal onto the stem - squeeze on. Use the pen to make marks. Add a little water with your finger then press the second petal on. Add marks with your pen/felt tip to secure petal. This also adds a pattern to make your flower look more realistic. Repeat until all petals are fixed in place.



Mark further lines into clay if needed.



Flatten the small ball that you made earlier.



Wet the centre of the flower with water and add the flattened circle to the middle of the flower. Add marks to the circle from your pen/felt tip.



Curve your stem and add some water to the bottom of the stem. Add your leaf and form it onto the stem pinching it on at the bottom. Be careful when doing this - you do not want to break the stem.

Your flower is finished. Store it somewhere safe to dry. This will take approximately 24/48 hours to dry fully if using air dry clay.

## HISTORY

# HOUSES & FACTORIES

On Regent Place you can still see a row of houses which was built around 1825, they are some of the oldest buildings in the Jewellery Quarter. They would have been here before the factories were built and before people started to use cars. One of them has an archway which was probably used as an entrance for horses and carts!

Just a few doors away is the Squirrel Works, a factory built for SJ Levi & Company from 1905 - 1910. They were electroplaters, which meant that they made products out of cheap metals and covered them in a thin layer of an expensive metal, such as gold and silver. They made lots of different household items, like vases for flowers, fruit baskets and milk jugs.

The makers mark, or trademark for SJ Levi & Co was a squirrel which you can see stamped on the items they made. Their electro-plated items also had 'E.P.N.S' stamped on them, this stands for Electro Plated Nickel Silver, which means that the base metal is nickel and it is coated with silver.







CUT ME OUT

Squirrel Template - Cut this shape out carefully, you will need this if you choose Option 2 on the Crafting Clay activit.