

MAKING A CHAIN



WITH TINA

You will need:

Paper strips 15cm long, 2cm wide

Foil or shiny paper

Felt tip pens

Glue stick

Share photos of your work with us on Instagram @jqth_project or Twitter @JQTHproject using the hashtags #JQMakes and #RegentPlaceJQ



HISTORY

CHAIN MAKING

There were many different types of jobs and businesses within the jewellery making industry– those who made rings, earrings, necklaces and cufflinks to name just a few! Each piece of jewellery has a hallmark and this includes the mark of the maker, and the symbol for the Assay Office where it was tested to check that it is good quality. The Birmingham Assay Office, one of the four assay offices in the United Kingdom, is located in the Jewellery Quarter and the symbol is an anchor.

On Regent Place, there were different chain makers. Freeman & Morgan and John Goode & Sons were gold chain manufacturers and they worked on Regent Place around the year 1900. In 1921, Allison Chains Ltd worked at number 16 and they made chunky gold chains. There are many ways to make a chain and different types such as snake, curb and cable chains. The cable chain is made up of circular or oval links that are the same size, and they are interlocked or looped together.

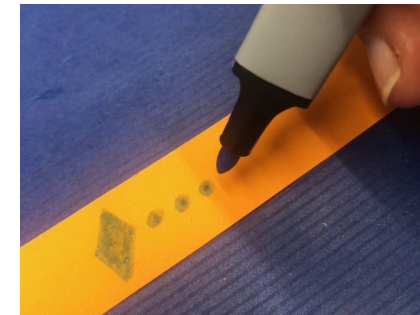


JOHN GOODE & SONS,
MANUFACTURERS OF
BRIGHT AND COLOURED
GOLD CHAINS,
LADIES' ALBERTS and NECKLATS, SEALS, &c., of every Description and Quality.
3, REGENT PLACE, CAROLINE STREET, BIRMINGHAM.

STEP 1

Decoration

Decorate the the paper strips, you could use felt tip pens, add foil, gems or anything else shiny that you have at home!



STEP 2

Add an Assay mark

The anchor represents Birmingham, and the initials are who made it (that's you)



STEP 3

Making the first link

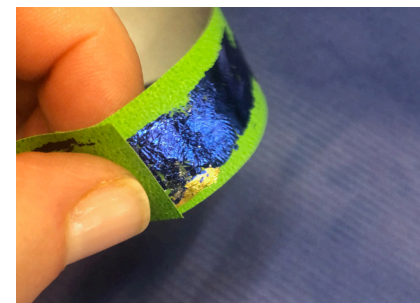
To make this strip of paper into your first link, add glue to one side of the strip of paper.



STEP 4

Making the circle

Fold the sticky part of the paper round to join the other end and make a circle, press the ends together so that they stick.



STEP 5

Making the next link

Link another paper strip through your first link and secure by pressing the ends together so that they stick. Continue until you have created a chain of links.

