

Nature Detectives Activity Pack

Spot plants and animals in the cemeteries, your garden or any green space you visit while you are on your allowed daily walk. Don't forget to stay at least 2 metres from people who aren't in your household that you see while walking. Share with us @JQCemeteries on social media.

Bird Spotting

Blackbird

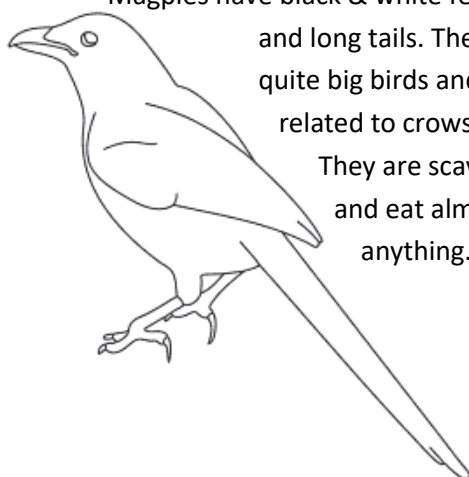
Male blackbirds have yellow beaks and a yellow ring around their eye. Female blackbirds are smaller with brown feathers. Blackbirds hop and run along the ground. They eat worms which they listen for by cocking their head to one side.



Magpie

Magpies have black & white feathers and long tails. They are quite big birds and are related to crows.

They are scavengers and eat almost anything.



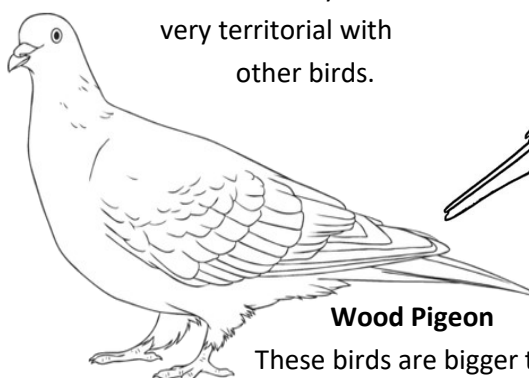
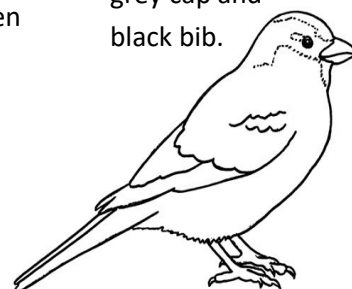
Robin

Robins are small birds, they have bright red feathers on their chests. Male and female robins look the same but young birds don't have red feathers and are spotted with golden brown. Robins look friendly but are very territorial with other birds.



House Sparrow

Even smaller than robins. These little birds like to live in groups and chatter to each other all day. Males have a grey cap and black bib.

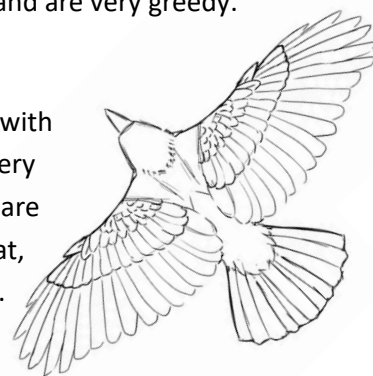


Wood Pigeon

These birds are bigger than ordinary pigeons (called Feral Pigeons). They make a soft cooing sound and are very greedy.

Carrion Crow

Crows are large black birds with fan shaped tails. They are very clever and adaptable. They are scavengers and will eat meat, worms, seeds, fruit & more.



Name of bird or description	Where was it? e.g. on the ground, in a tree	What was it doing? e.g. flying, hopping, feeding

Bonus activities

- Be quiet and listen, can you hear any birds singing? You can download an app like BirdNET or UK Bird Sounds to help identify bird songs!
- To help identify birds you see which aren't on this page, you can use the Merlin Bird ID app, take a photo or draw a picture and check on RSPB or Wildlife Trust websites.

www.rspb.org.uk

www.wildlifetrusts.org

Mammals and Minibeasts

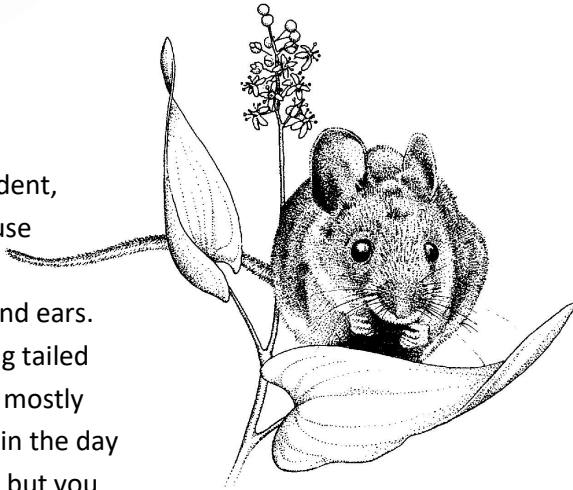
Ladybirds

Round beetles with red wing cases. The most common variety of ladybirds have 7 spots, three on each wing and one where the wings meet in the middle. Ladybirds eat insects that damage plants so gardeners like to have them around.



Wood Mouse

Tiny golden brown rodent, similar in size to a house mouse or pet mouse but with larger eyes and ears. Also known as the long tailed field mouse. They are mostly nocturnal (they sleep in the day and wake up at night) but you might find nut shells with round holes nibbled in them. They store berries and seeds for the winter in underground burrows.



Bonus activities

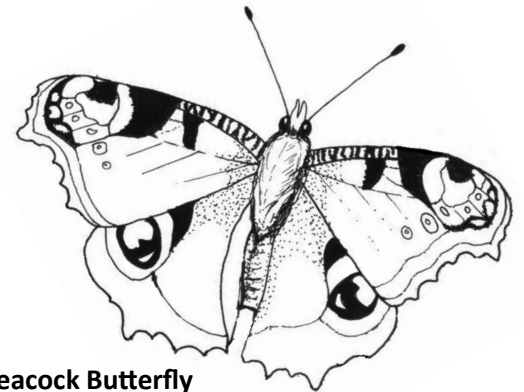
- You can help us make a record of all the wildlife in the UK by downloading the iNaturalist app or uploading to their website. These records help lots of people who study nature including scientists all over the world.
- You can be friends with wildlife in your own garden by building a home for them or planting food they like to eat. Check out the Wildlife Trust website for great ideas!
<https://www.wildlifetrusts.org/wild-activities-families-and-schools>

Grey Squirrel

Grey squirrels live in nests called dreys.

In the autumn they store nuts to eat during the winter.

If you see shattered or split nut shells they have probably been eaten by a squirrel.



Peacock Butterfly

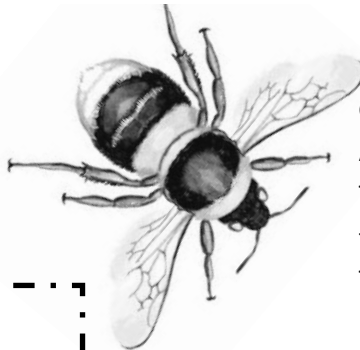
Dark red wings with dark edges and four eyes like peacock feathers on them. Their bodies are dark red and hairy.

Garden Bumblebee

A large scruffy looking bee with a white tail.

They have a long tongue for drinking nectar from tube shaped flowers like cowslips.

They live in underground colonies with up to 100 workers and a Queen. Bees won't sting unless they feel frightened.



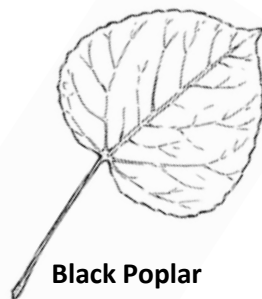
Draw a picture of an animal or minibeast you have spotted here!

Trees and Flowers



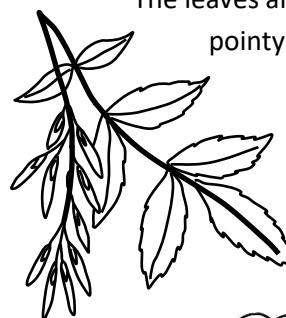
London Plane

Large leaves with 3 points. The bark looks like camouflage!



Black Poplar

Tall trees with heart shaped leaves. The bark is very rough.

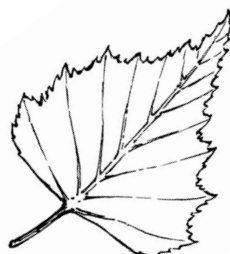


Weeping Ash

Has long trailing branches. The leaves are small and pointy. The seed pods are long and thin and hang down in bunches.

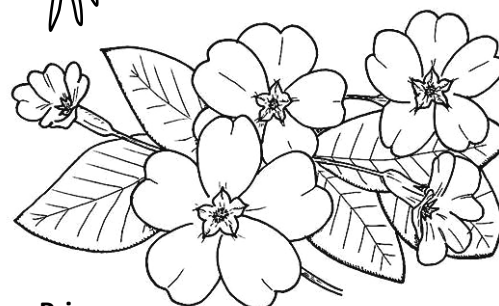
Silver Birch

Slim trees with white stripy bark. The leaves are small, triangular and have jagged edges.



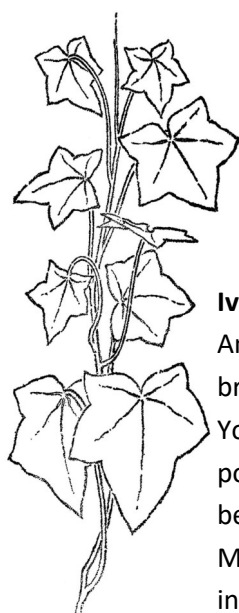
Common Daisy

Likes to grow in short grass. The flowerhead is made from a number of tiny flowers forming the yellow disc and white rays which look like petals.



Primroses

Low growing plant with rough tongue like leaves and creamy flowers with a yellow centre.

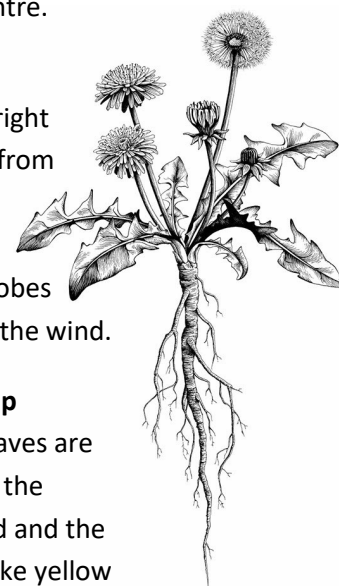


Ivy

An evergreen (the leaves don't turn brown and fall in winter) climbing plant. Young ivy plants have leaves with 3 to 5 points. As the plant matures the leaves become oval, dark green and glossy. Mature ivy has yellowish green flowers in autumn and round black fruits.

Dandelion

The flowers are bright yellow and made from lots of flowerlets. The seed heads are white fluffy globes which disperse in the wind.



Cowslip

The leaves are low to the ground and the tube-like yellow flowers are in clusters at the end of upright stems.



Remember not to pick the leaves or flowers, just look for them so that they will still be there for other people to enjoy!

Can you find?	Tick
A shiny leaf	
A green leaf	
A brown leaf	
A leaf that had been nibbled	
A seed, cone or conker	
A white flower	
A yellow flower	

Bonus activity

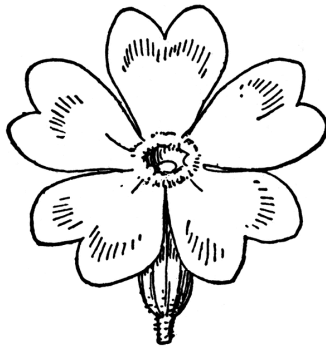
How many different flowers can you find?

Make a tally here. Can you find out what any are called?

Word Search

Can you find these nature related words?

Ivy
Birch
Ladybird
Bumblebee
Daisy
Squirrel
Crow
Robin
Primrose
Magpie
Blackbird
Poplar



W	C	C	D	R	I	B	K	C	A	L	B	M	E
U	L	Q	B	O	V	E	E	E	L	A	Y	A	I
S	E	E	B	E	L	B	M	U	B	E	D	G	A
N	C	B	I	R	D	I	L	L	V	S	E	P	R
B	R	B	R	O	R	Y	E	R	D	U	S	I	A
O	S	S	D	B	A	L	R	B	R	D	N	E	R
N	L	B	M	I	L	I	R	I	B	C	A	O	P
A	U	A	E	N	P	R	I	M	R	O	S	E	I
I	B	A	D	S	O	O	U	R	B	I	R	C	H
R	L	R	I	Y	P	R	Q	U	Y	Y	Y	O	D
R	C	R	B	B	B	M	S	E	U	V	A	M	A
E	V	R	D	I	A	I	D	Q	O	I	A	B	I
O	A	G	O	H	P	E	R	N	A	B	A	B	S
R	C	D	I	W	B	P	O	D	R	R	L	A	Y

Colouring Page

How many animals & birds can you spot in the picture of Key Hill cemetery below? Can you name any of them? You can colour in the other pictures in the activity pack too. Share your creativity @JQCemeteries on social media.

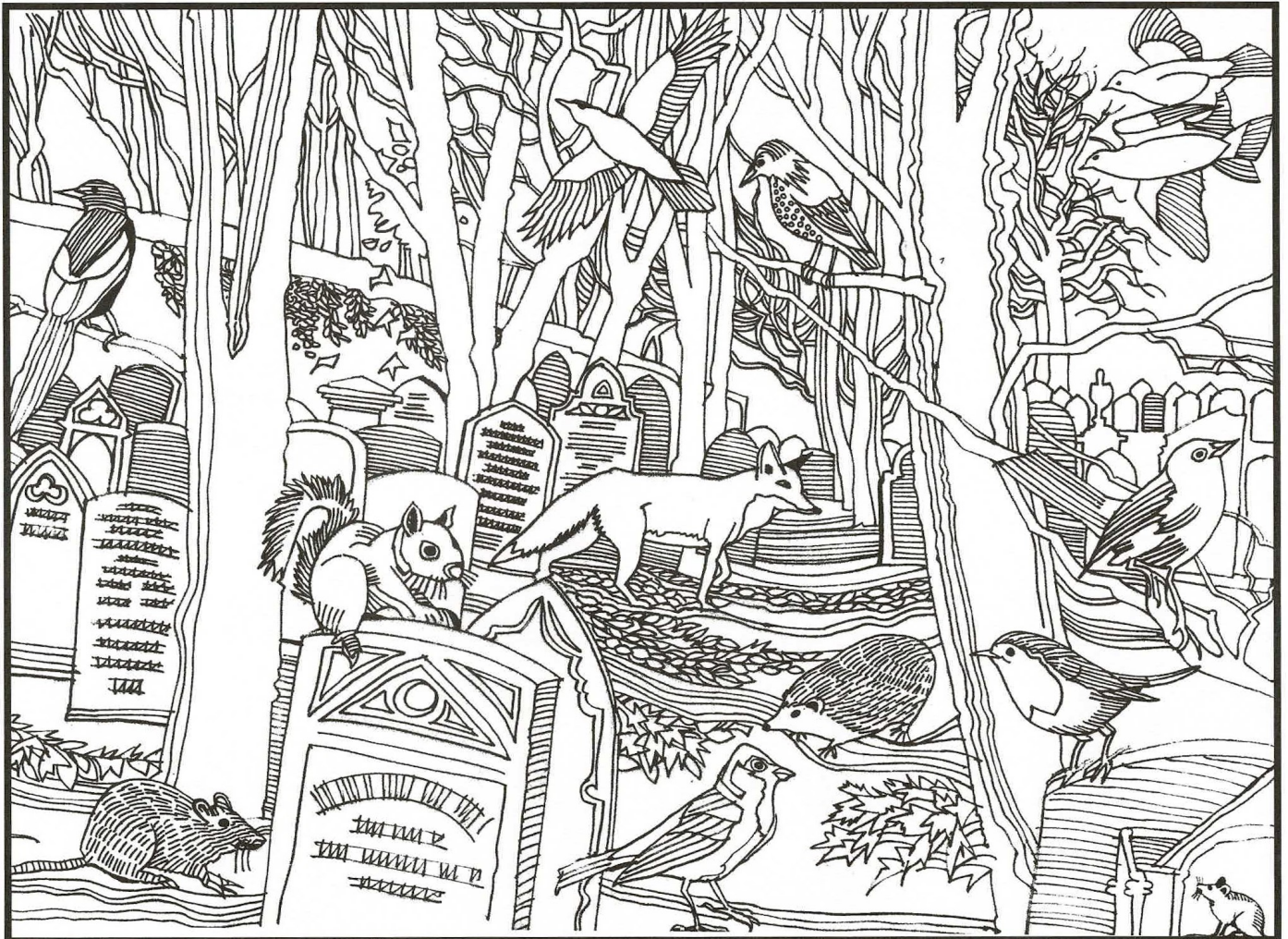


Illustration by John Scott Martin RBSA, FRSA 2009

Project funded by:

